

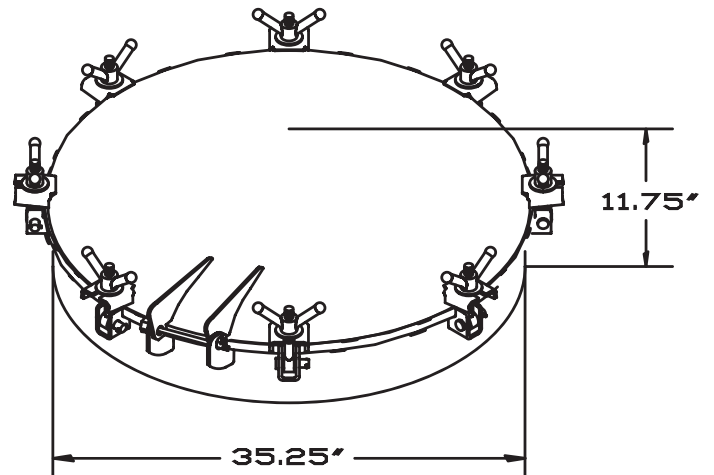
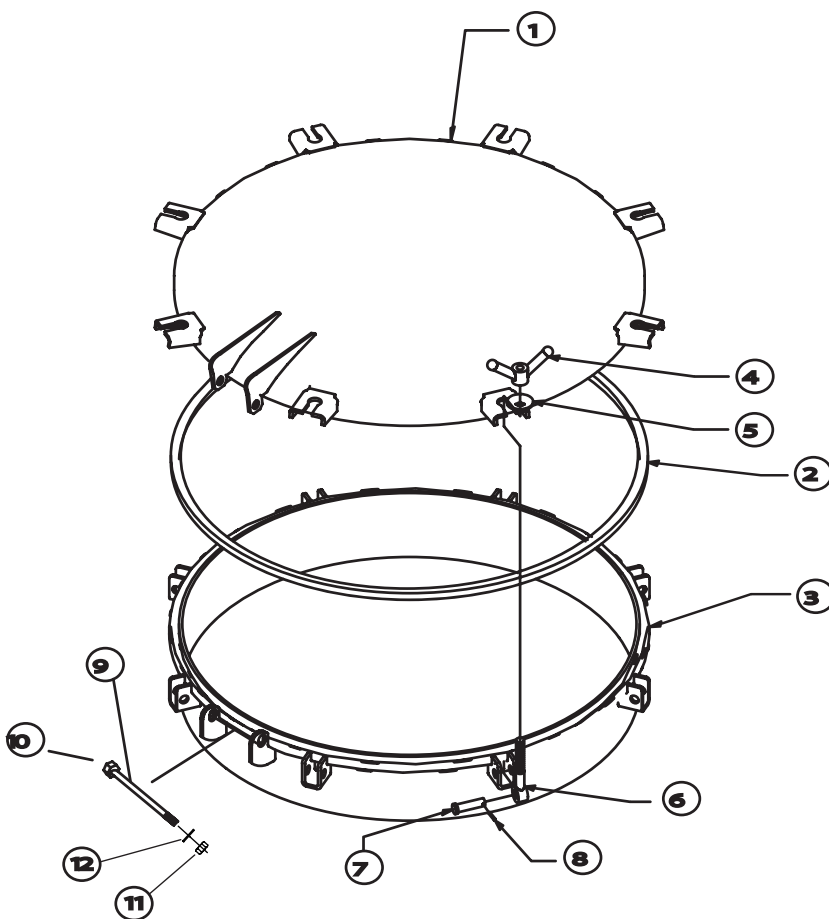
MANWAYS

36" MANWAY 6" NECK

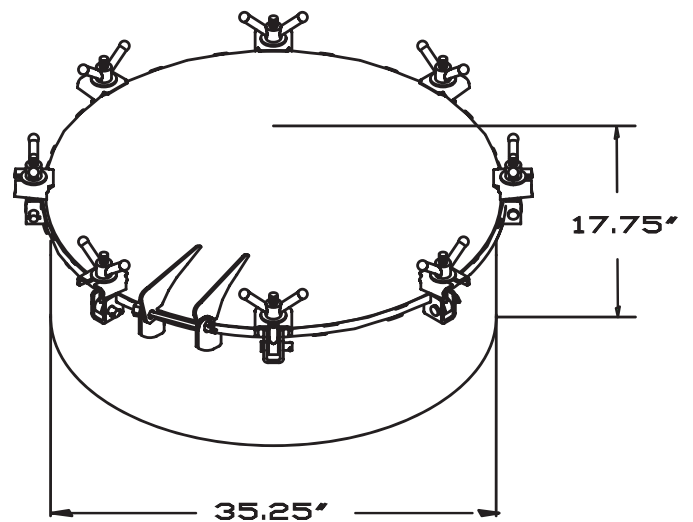
#	PART#	DESCRIPTION
REPLACEMENT PARTS		
1	1012-0200	36" LID ASSEMBLY
2	1012-0005	36" SQ. GASKET (5/8" SQ. MATERIAL BUNA N)
3	1012-0206	36" BASE ASSEMBLY 6" NECK
4	1010-0001	WIGNUT
5	1010-0003	ZINC MANWAY WASHER
6	1021-0000-B	5/8X5" EYEBOLT
7	1021-0000-P	ZINC PLATED CLEVIS PIN
8	1021-0000-R	ZINC PLATED ROLL PIN
9	1000-0165-09	5/8" BOLT
10	1000-0113-01	5/8" STAINLESS STEEL FLATWASHER
11	1000-0171	5/8" HEX NUT
12	1000-0113	5/8" FLATWASHER

36" MANWAY 12" NECK

#	PART#	DESCRIPTION
REPLACEMENT PARTS		
1	1012-0200	36" LID ASSEMBLY
2	1012-0005	36" SQ. GASKET (5/8" SQ. MATERIAL BUNA N)
3	1012-0213	36" BASE ASSEMBLY 12" NECK
4	1010-0001	WIGNUT
5	1010-0003	ZINC MANWAY WASHER
6	1021-0000-B	5/8X5" EYEBOLT
7	1021-0000-P	ZINC PLATED CLEVIS PIN
8	1021-0000-R	ZINC PLATED ROLL PIN
9	1000-0165-09	5/8" BOLT
10	1000-0113-01	5/8" STAINLESS STEEL FLATWASHER
11	1000-0171	5/8" HEX NUT
12	1000-0113	5/8" FLATWASHER



36" Manway with 6" Neck



36" Manway with 12" Neck