

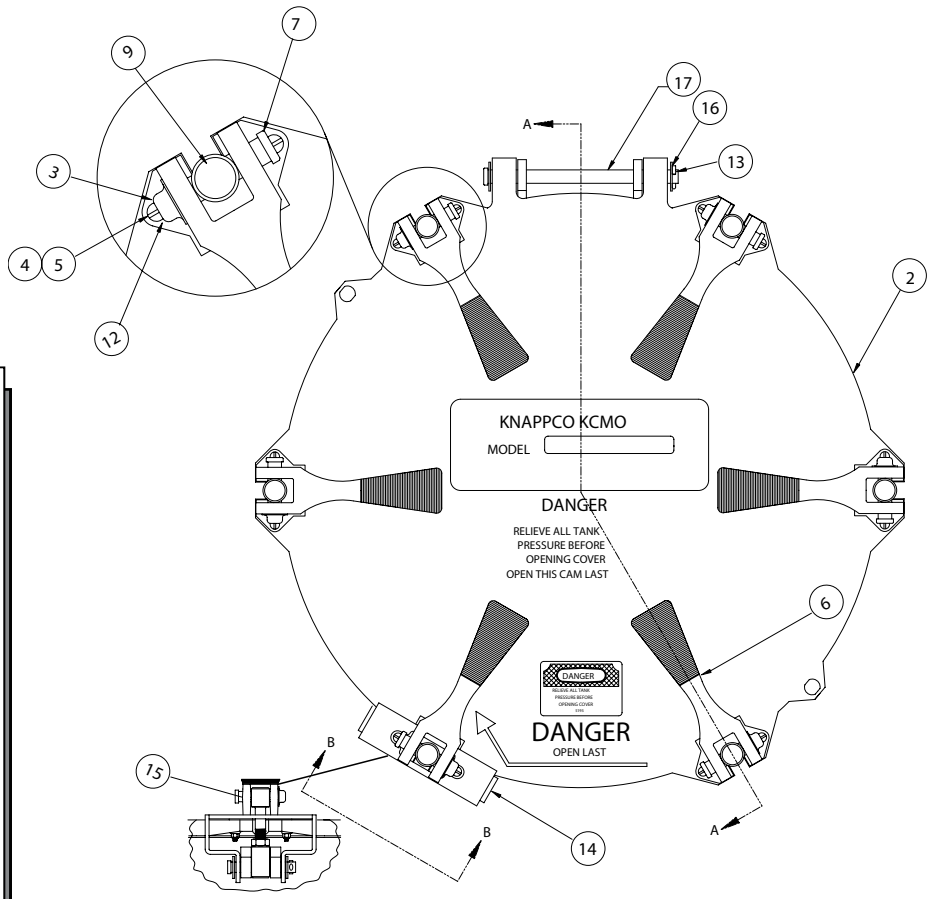
# 20" ALUMINUM MANWAY

MANWAYS

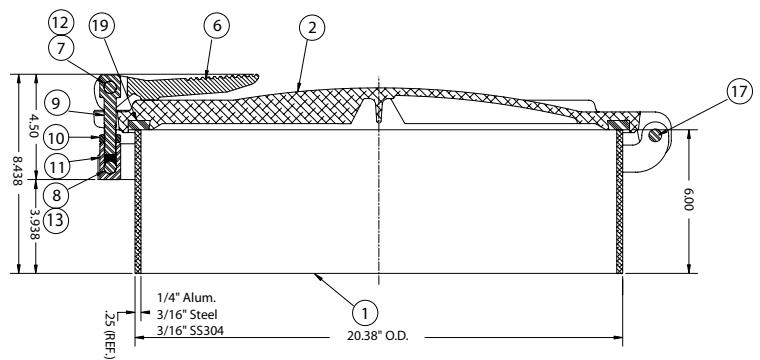


PART#	DESCRIPTION	WEIGHT
1010-0030	20" MANWAY WITH 6" ALUMINUM NECK, 6 CAM LEVER LID	40LBS
1010-3012	20" MANWAY WITH 12" ALUMINUM NECK, 6 CAM LEVER LID	55LBS
1010-0031	20" MANWAY WITH 6" 304 STAINLESS STEEL NECK, 6 CAM LEVER LID	50LBS
1010-0035	20" MANWAY WITH 6" MILD STEEL NECK, 6 CAM LEVER LID	50LBS
1010-0037	20" MANWAY WITH 12" MILD STEEL NECK, 6 CAM LEVER LID	71LBS

- **6 QUICK OPENING ADJUSTABLE CAM LEVERS**
- **ALUMINUM, MILD STEEL OR STAINLESS STEEL 6" NECK**
- **WELDABLE BASE IS 20.38" O.D.**



#	PART#	DESCRIPTION
REPLACEMENT PARTS		
1A	1010-3467	6" ALUMINUM NECK ASSEMBLY
1B	1010-3412	12" ALUMINUM NECK ASSEMBLY
1C	1010-3506	6" STEEL NECK ASSEMBLY
1D	1010-3512	12" STEEL NECK ASSEMBLY
1E	1010-3511	6" STAINLESS STEEL NECK ASSEMBLY
2	1010-3902	20" ALUMINUM HEAD W/GASKET
3	1010-3903	WEAR PLATES
4	1010-3904	SCREW, SS 10-32 (10)
5	1010-3905	NUTS, SS, 10-32 (12)
6	1010-3906	CAM LEVER
7	1010-3907	PIVOT PIN, UPPER (11)
8	1010-3908	PIVOT PIN, LOWER (5)
9	1010-3909	CLAMP STUD (6)
10	1010-3910	JAM NUT (6)
11	1010-3911	CONNECTOR (6)
12	1010-3912	PAL NUT (12)
13	1010-3913	COTTER PIN
14	1010-3914	SAFETY CATCH
15	1010-3915	SAFETY CATCH PIN
16	1010-3916	WASHER
17	1010-3917	HINGE PIN
18	1010-3918	SCREW, 10-32 X 7/8 (2)
19	1010-3919	GASKET FOR 20" ALUMINUM MANWAY
20	1010-3920	CAM LEVER ASSEMBLY (NUMBERS 6,7,8,9,10,11,12, & 13)



[www.chandlerequipment.com](http://www.chandlerequipment.com)

Due to unforeseeable market fluctuations, prices are subject to change without notice.

