

20" ALUMINUM PRIMARY SHUTOFF

HEAVY DUTY ZINC PLATED HARDWARE

PRIMARY SHUTOFFS

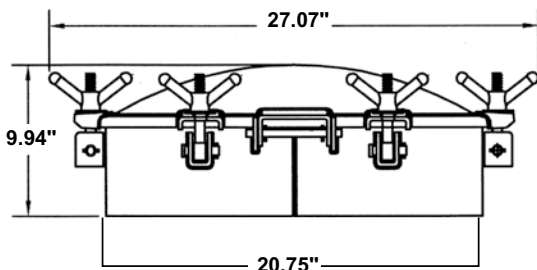
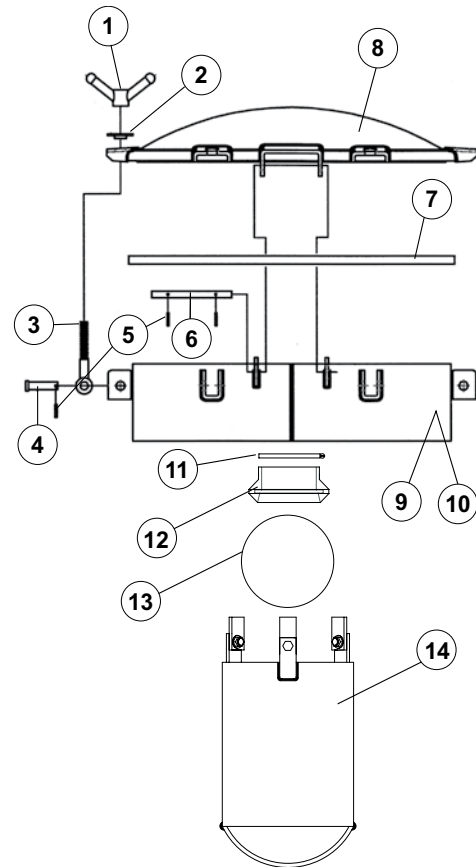


- GASKET IN THE LID DESIGN
- 304 STAINLESS STEEL HEAD
- BASE AVAILABLE IN ALUMINUM OR STAINLESS STEEL
- 8" STAINLESS STEEL BALL CAGE ASSEMBLY
- STAINLESS STEEL FLOAT BALL

PART#	DESCRIPTION	W x H	WEIGHT
1010-9015	20" STAINLESS STEEL PRIMARY WITH 6" ALUMINUM NECK, 3" NPT S.S., (550 CFM)	27 X 17	92BS
1010-9016	20" STAINLESS STEEL PRIMARY WITH 10" ALUMINUM NECK, 3" NPT	-	-
1010-9016-4	20" STAINLESS STEEL PRIMARY WITH 10" ALUMINUM NECK, 4" NPT	-	-

20" PRIMARY SHUTOFF SPEC SHEET

#	PART#	DESCRIPTION
REPLACEMENT PARTS		
1	1010-0001	5/8" ZINC PLATED WING NUT (2LBS)
2	1010-0003	ZINC MANWAY WASHER
3	1021-0000-B	5/8" X 5" ZINC PLATED EYEBOLT (.80LBS)
4	1021-0000-P	ZINC PLATED CLEVIS PIN (.19LBS)
5	1021-0000-R	ZINC PLATED ROLL PIN (.06LBS)
6	1021-0000-HP	ZINC HINGE PIN (.44LBS)
7	1019-0011	GASKET FOR 20" MANWAY
8	1010-9030	20" MANWAY LID ASSY. STAINLESS STEEL, (304)
9	1010-9040	20" ALUM. BASE ASSY. 6" NK. (6061)
10	1010-9046	20" S.S. BASE ASSY. 6" NK. (304)
11	1090-0001	HOSE CLAMP FOR 1090 SEAT
12	1090-0000	3.5" RUBBER SEAT
13	1076-0000	6" STAINLESS STEEL FLOAT BALL
14	1014-0104	8" STAINLESS STEEL BALL CAGE W/S.S. TABS, 304



www.chandlerequipment.com

Due to unforeseeable market fluctuations, prices are subject to change without notice.

