

# 25" MANWAY (5 OR 6 WING NUT)



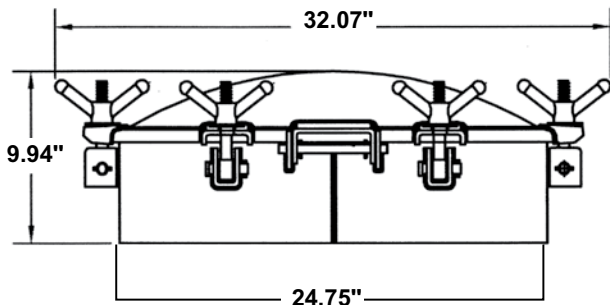
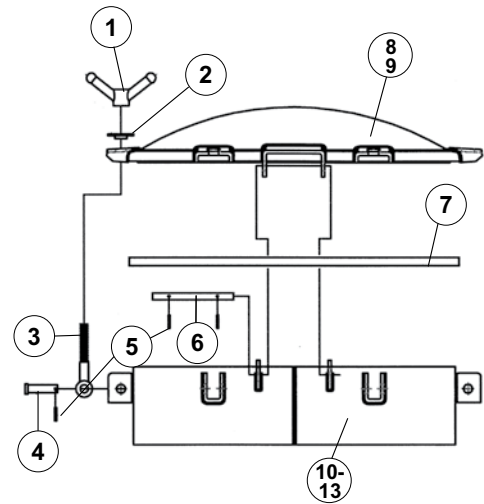
- GASKET IN THE LID DESIGN
- STANDARD NECK LENGTHS OF 6 OR 12 INCHES
- WELDABLE BASE IS 1/4" STEEL
- 3/16" STEEL CONSTRUCTION

MANWAYS

PART#	DESCRIPTION	WEIGHT
1010-8000	25" MANWAY WITH 6" NECK, 6 WING NUT LID - 1/4" BASE	94LBS
1010-0084	25" MANWAY WITH 12" NECK, 6 WING NUT LID - 1/4" BASE	126LBS
1010-8200	25" MANWAY WITH 6" NECK, 5 WING NUT LID, <b>LEFT HAND HINGE</b> - 1/4" BASE	89LBS
1010-0085	25" MANWAY WITH 12" NECK, 5 WING NUT LID, <b>LEFT HAND HINGE</b> - 1/4" BASE	121LBS

## 25" MANWAY SPEC SHEET

#	PART#	DESCRIPTION
REPLACEMENT PARTS		
1	1010-0001	5/8" ZINC PLATED WING NUT (2LBS)
2	1010-0003	ZINC WASHER (.188LBS)
3	1021-0000-B	5/8" X 5" ZINC PLATED EYEBOLT (.80LBS)
4	1021-0000-P	ZINC PLATED CLEVIS PIN (.19LBS)
5	1021-0000-R	ZINC PLATED ROLL PIN (.06LBS)
6	1021-0000-HP	HINGE PIN (.44LBS)
7	1019-0012	GASKET FOR 25" MANWAY
8	1010-8603	25" MANWAY LID ASSY, 6 WING NUT
9	1010-8604	25" MANWAY LID ASSY, 5 WING NUT, LEFT HAND HINGE
10	1010-8606	25" MANWAY BASE ASSY, 6WN/6" NECK
11	1010-8607	25" MANWAY BASE ASSY, 5WN/6" NECK, LEFT HAND HINGE
12	1010-8612	25" MANWAY BASE ASSY, 6WN/12" NECK
13	1010-8613	25" MANWAY BASE ASSY, 5WN/12" NECK, LEFT HAND HINGE



[www.chandlerequipment.com](http://www.chandlerequipment.com)

Due to unforeseeable market fluctuations, prices are subject to change without notice.

