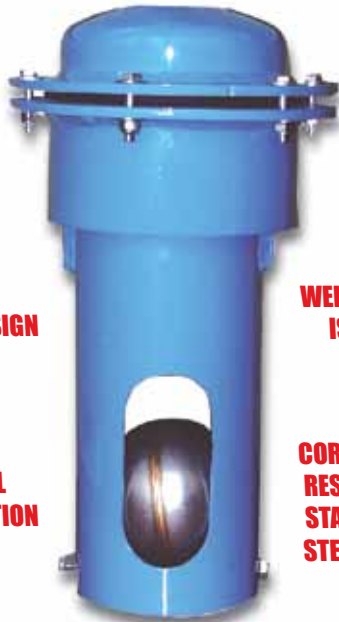


# 6" STEEL PRIMARY SHUTOFFS

PART#	DESCRIPTION	L x W x H	WEIGHT
1033-0001	STEEL PRIMARY WITH 2" OPENING, (130 CFM)	9 x 9 x 16	19LBS
1034-0001	STEEL PRIMARY WITH 3" OPENING, (250 CFM)	9 x 9 x 16	23LBS

**AVAILABLE WITH 2" OR 3" SIZE OPENINGS**



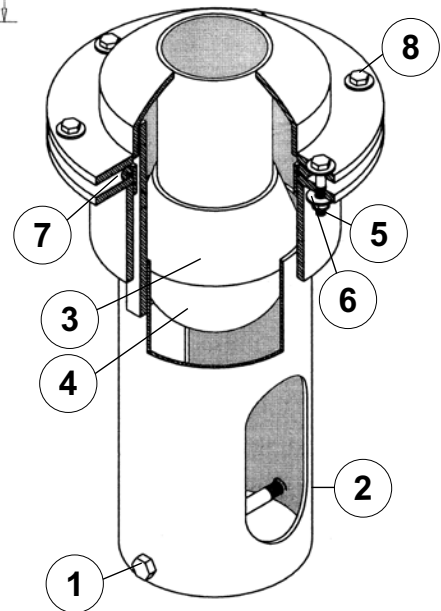
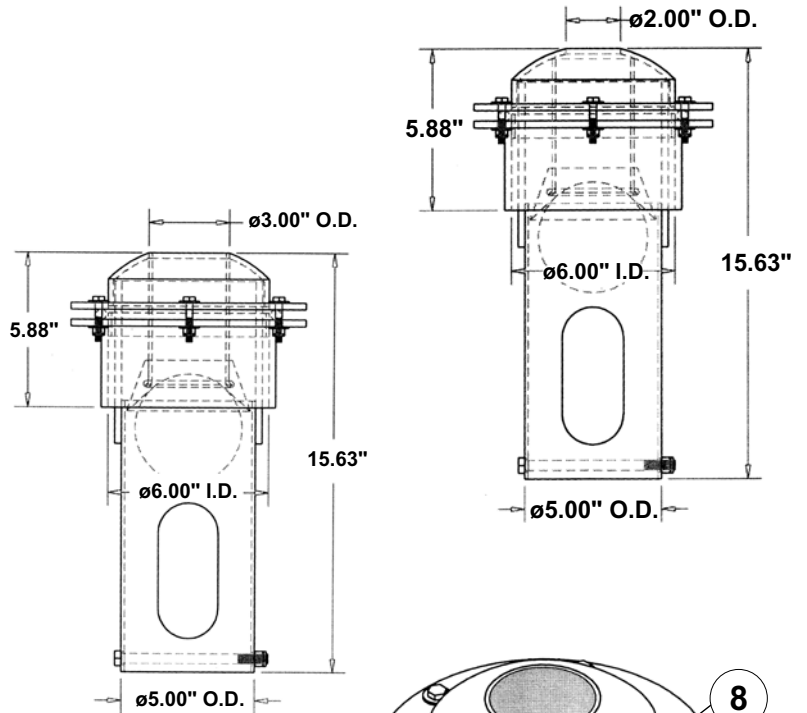
**6 BOLT FLANGE DESIGN**

**WELDABLE BASE IS 6.5" O.D.**

**ALL STEEL CONSTRUCTION**

**CORROSION RESISTANT STAINLESS STEEL BOLT**

**4" STAINLESS STEEL FLOAT BALL FOR POSITIVE SHUTOFF**



#	PART#	DESCRIPTION
REPLACEMENT PARTS		
1	1000-0144-004	3/8"-16 X 5.5" SS CAP SCREW
2	1000-0144-005	3/8" SS LOCK NUT
3	1089-0000	3" RUBBER SEAT
4	1075-0000	4" STAINLESS STEEL FLOAT BALL
5	1000-0100	1/4" LOCK NUT
6	1000-0108	1/4" FLAT WASHER
7	1033-1000	GASKET FOR STEEL PRIMARY
8	1000-0126	1/4" X 1 1/2" CAP SCREW

**FOR YOUR INFORMATION:**  
 ELBOWS AND HOSE SHANKS FOR THESE ITEMS ARE AVAILABLE IN 2", 3", AND 4" SIZES  
[www.chandlerequipment.com](http://www.chandlerequipment.com)