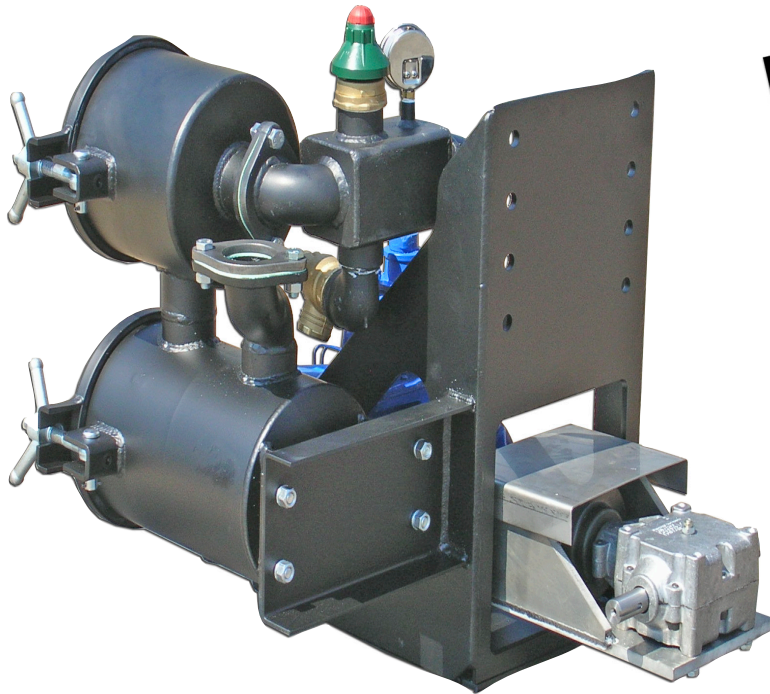


# PN23 JURO-PAK

**JUROP PN23 Vacuum Pump** combined with a state of the art Gearbox Auto Alignment and Shutoff-Filter System complete with powder coating and assembly.



**Bolt  
-N-  
Go**

**FILTER ELEMENT**



**55 MESH WIRE STAINLESS  
STEEL CONSTRUCTION  
(For High Heat Applications)**



## PN23 JURO-PAK

- **JUROP PN23 VACUUM PUMP**
- **PUMP MOUNTING STAND MADE OF 3/8" HEAVY DUTY STEEL**
- **ALUMINUM AUTO ALIGN BRACKET**
- **3 SHAFT GEARBOX WITH 1" SHAFT**
- **1" X 1 3/8" SIZE 8 PUMP COUPLING**
- **2 GALLON HORIZONTAL SECONDARY**
- **FINAL FILTER WITH "REUSABLE" 55 MESH FILTER**
- **VACUUM PRESSURE TREE WITH 2" BRASS PRESSURE RELIEF VALVE, 1 1/2" BRASS VACUUM RELIEF VALVE & 2 1/2" LIQUID FILLED VACUUM PRESSURE GAUGE**
- **POWDER COATING & ASSEMBLY**

**NEW  
Design**

**FOR 0 - 1000  
GALLON TANK  
STANDARD DUTY  
APPLICATIONS**

### PACKAGE

#### JURO-PAK

PART#	DESCRIPTION
1004-0230	JURO-PAK PN23

### JUROP PN23

- **CFM RANGE 92**
- **27.6" MAXIMUM VACUUM**
- **FORCED OIL LUBRICATION**
- **BUILT-IN OIL RESERVOIR**



**1-800-342-0887 • FAX 1-888-645-9700 • www.chandlerequipment.com**